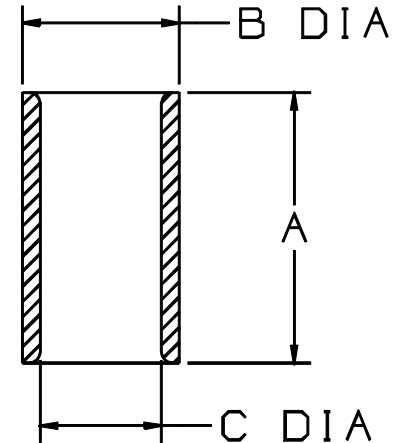


THIS COPY IS PROVIDED ON A RESTRICTED BASIS AND IS NOT TO BE USED IN ANY WAY DETRIMENTAL TO THE INTERESTS OF PANDUIT CORP.

PANDUIT PART NUMBER	WIRE COMBINATION (COMBINATION OF ANY TWO)	DIMENSIONS in.		
		A $\pm .03$	B $\pm .01$	C $\pm .01$
PS18	#22 TO #18	.29 (7.4)	.13 (3.3)	.10 (2.5)
PS16	#20 TO #16	.29 (7.4)	.16 (4.1)	.12 (3.0)
PS12	#14 TO #12	.38 (9.7)	.22 (5.6)	.17 (4.3)

NOTES:

1. UL LISTED AND CSA CERTIFIED FOR:
A. SOLID OR STRANDED COPPER WIRE
2. MATERIAL: BRASS, TIN PLATED
3. PACKAGE QTY: STD PKG -C=100 (QTY -L=50 FOR PS12)
BULK PKG -M=1000 (QTY -D=500 FOR PS12)
4. DIMENSIONS IN BRACKETS ARE IN MILLIMETERS
5. INSTALLATION TOOLS:
A. UL LISTED AND CSA CERTIFIED: CT-100, CT-200
B. PANDUIT APPROVED: CT-260
6. WIRE STRIP LENGTH: $5/16^{+1/32}_{-.0}$ (7.9 $^{+.8}_{-.0}$)
 $7/16^{+1/32}_{-.0}$ (11.1 $^{+.8}_{-.0}$) FOR PS12



LISTED
587H
E52164



CERTIFIED
LR31212

A41339_05

05	1/01	RM		FILESPEC WAS N41339AA_PCD_04					TINLEY PARK, ILLINOIS		
04	12/94	TH		UPDATED NOTES AND DIMENSIONS	02778						
03	4/91	DL	DL	PS12 UL LISTED AND CSA APPROVED	00391	LA	KRS	NON-INSULATED PARALLEL SPLICE			
02	9/88	DW		REDRAWN WITH REVISIONS							
REV	DATE	BY	CHK	DESCRIPTION	ECN #	CUST	PM	DRAWN BY DRL	CHK'D	SCALE NONE	DRAWING NO. A41339